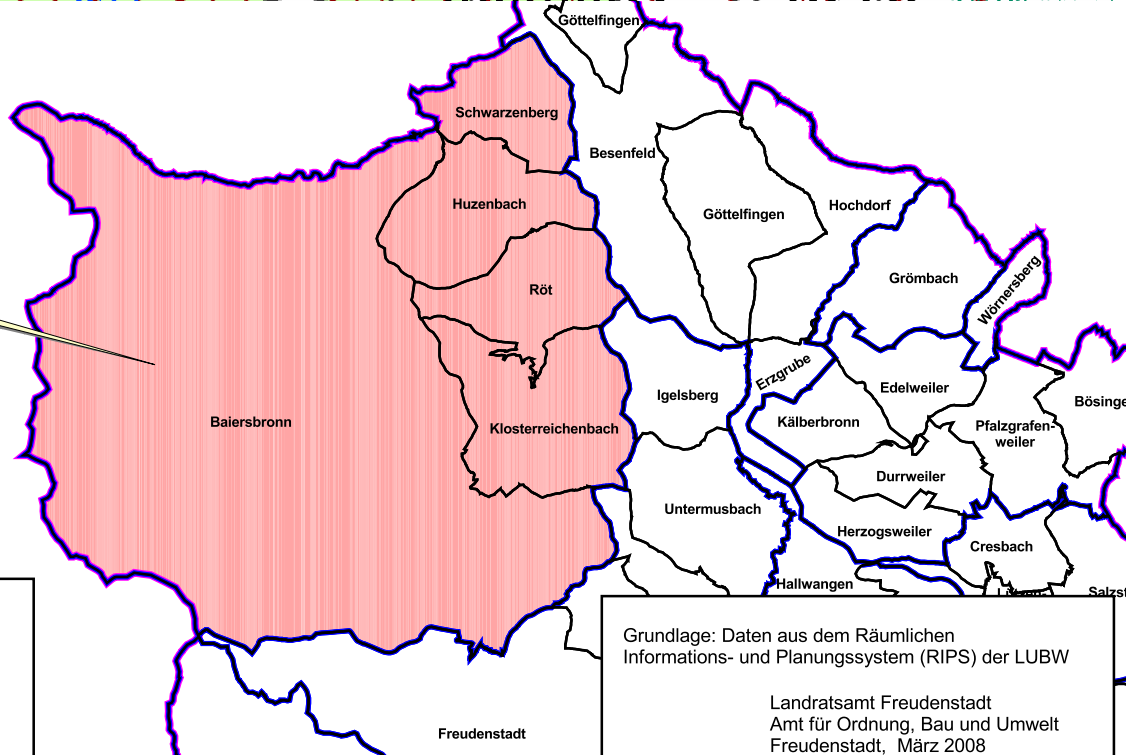
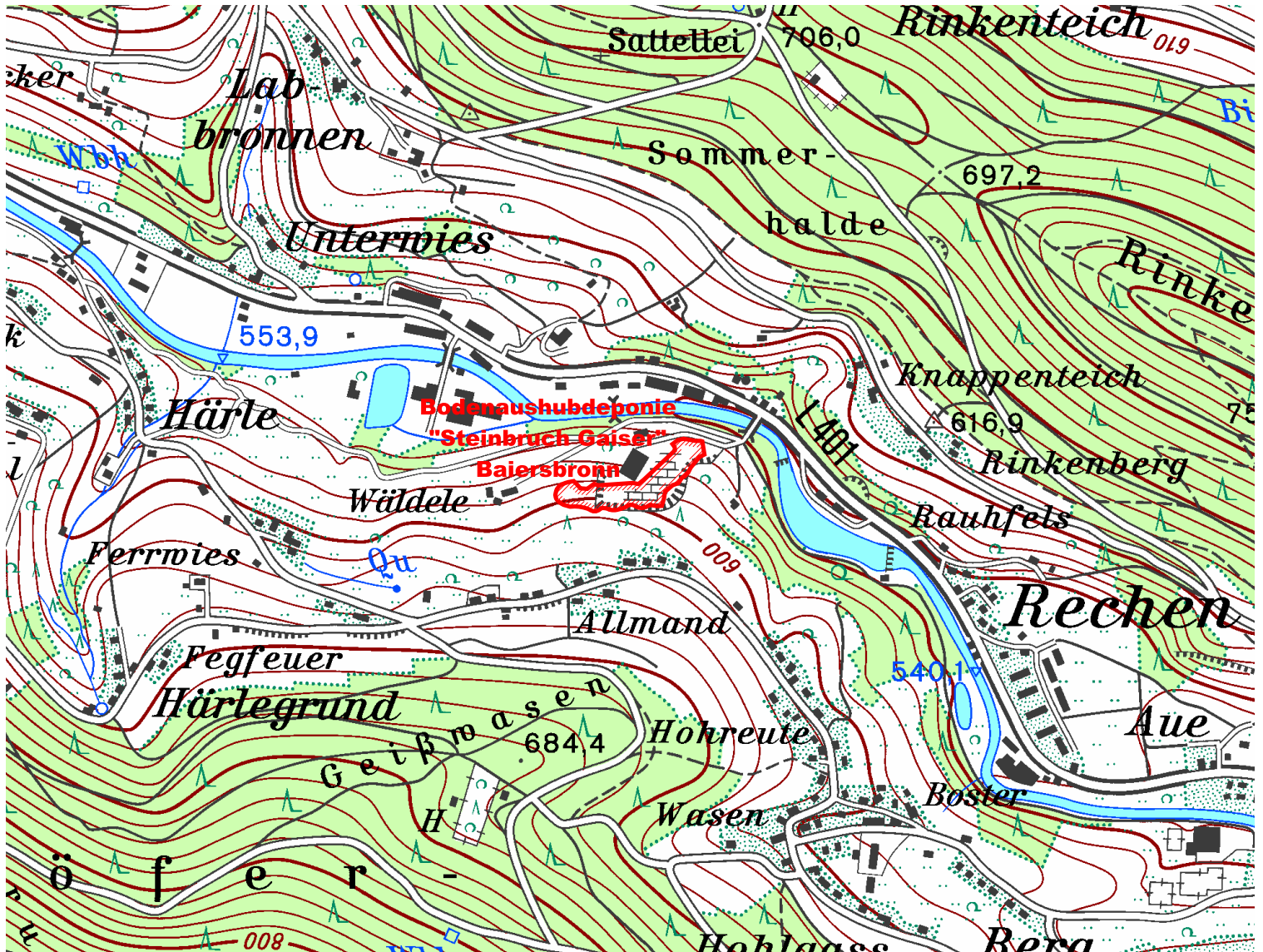






Bodenaushubdeponie Steinbruch Gaiser Baiersbronn



Einzugsgebiet

-  Gemarkungsgrenzen
-  Gemeindegrenzen
-  Kreisgrenze
-  Deponieeinzugsgebiet

Grundlage: Daten aus dem Räumlichen Informations- und Planungssystem (RIPS) der LUBW

Landratsamt Freudenstadt
Amt für Ordnung, Bau und Umwelt
Freudenstadt, März 2008